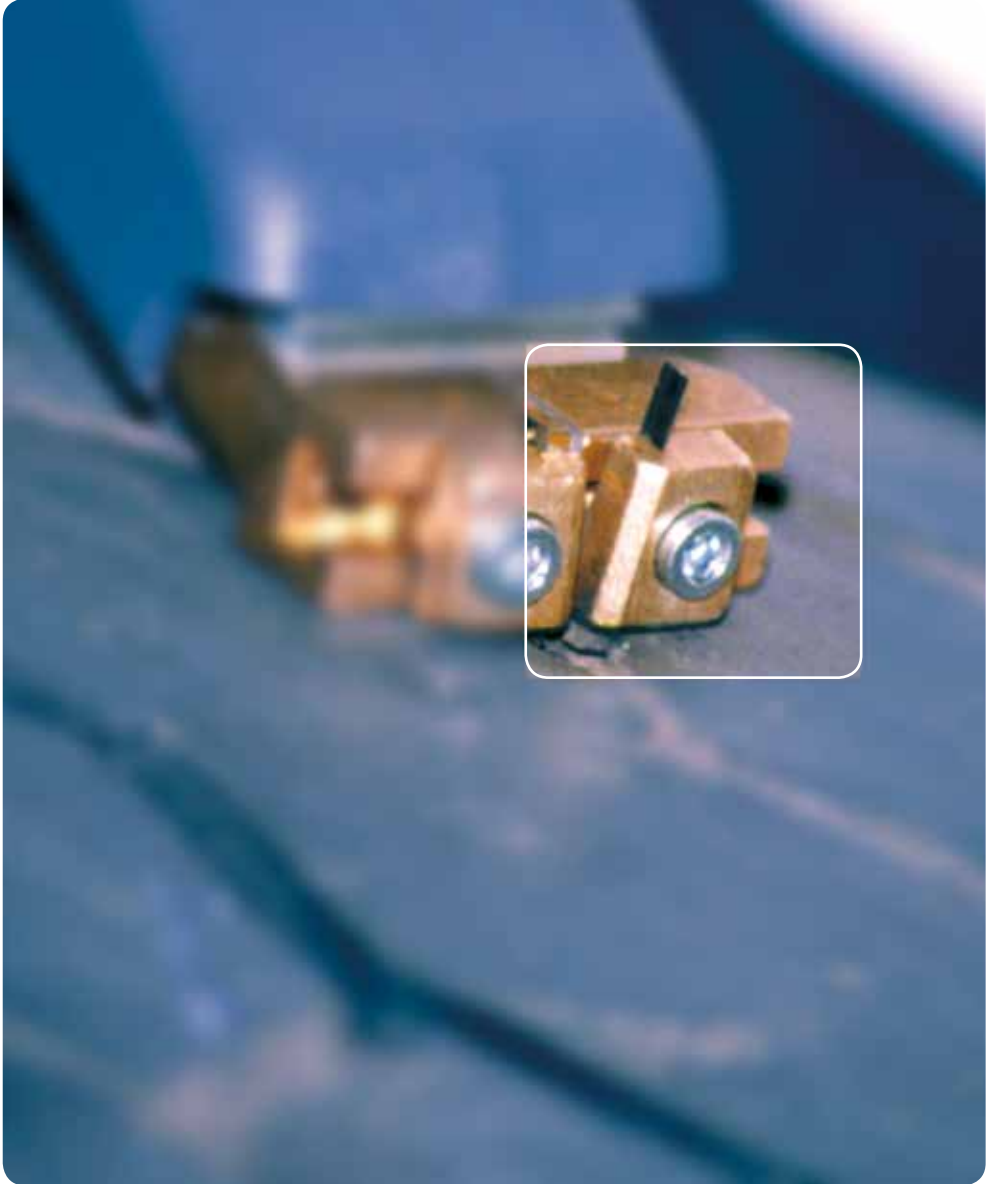


# **BRIDGESTONE**

## REGROOVING DATA BOOK 2016



## Regrooving data

### Highway use

<b>Steer</b>	ECOPIA H-STEER 001 .....	113
	R249 Ecopia .....	114
	R249 EVO / R249 EVO Ecopia / R249II EVO Ecopia .....	115
	R294 .....	116
<b>Drive</b>	ECOPIA H-DRIVE 001 .....	117
	M749 / M749 Ecopia .....	118
	GREATEC M709 Ecopia .....	119
	M730 .....	120
	M711 .....	121
<b>Trailer</b>	ECOPIA H-TRAILER 001 .....	122
	R166II .....	123
	R164 .....	124
	R184 .....	125
	R187 .....	126

### Regional use

<b>Steer</b>	R-STEER 001 / R-STEER 001 EVO .....	127
	R297 .....	128
	R297 EVO .....	129
	R227 .....	130
<b>Drive</b>	M788 .....	131
	R-DRIVE 001 .....	132
	M729 .....	133
<b>Trailer</b>	M730 .....	134
	R168 / R168PLUS .....	135
	R166II .....	136
	R164 .....	137
	R180 .....	138
	R184 .....	139
	R187 .....	140

## Regrooving data

### On/Off Road use

<b>All position</b>	M840 / M840 EVO / M840 EXTRA .....	141
<b>Steer</b>	M-STEER 001 .....	142
<b>Drive</b>	M-DRIVE 001 .....	143
	L355 / L355 EVO .....	144
<b>Trailer</b>	M-TRAILER 001 .....	145
	M748 / M748 EVO .....	146
	M844 .....	147

### Off Road use

<b>All position</b>	L317 / L317 EVO .....	148
---------------------	-----------------------	-----

### Urban use

<b>All position</b>	U-AP 001 .....	149
	R192 .....	150
	M788 .....	151
	M788 EVO .....	152
<b>Drive</b>	GREATEC R173 .....	153

### Coach use

<b>Steer/Drive</b>	M788 EVO .....	154
	M788 .....	155

### Winter use

<b>Steer</b>	W958 .....	156
	M788 .....	157
<b>Drive</b>	W990 .....	158
	W970 .....	159
<b>Trailer</b>	M852 .....	160

# RECOMMENDATIONS FOR REGROOVING BRIDGESTONE STEEL RADIAL TYRES FOR TRUCKS AND BUSES

## INTRODUCTION

Regrooving Bridgestone steel radial tyres for trucks and buses will ensure longer serviceability of your tyres. Check that the word “REGROOVABLE” is molded on the tyre sidewall. If it is not, under no circumstances should regrooving be attempted.

## GUIDELINES

1. Tyre must be demounted from the rim before regrooving.
2. Inspection:
  - a) Before regrooving, check to see that there is no damage on any part of the tyre, i.e. tread, shoulders, sidewalls, beads and inner liner.
  - b) Remove stones which may have become embedded in the grooves, and other foreign objects such as nails from the tread. Repair if necessary.
  - c) Particular care should be exercised when selecting a tyre for regrooving if the tread area is in any way damaged, e.g. by chipping, tearing and cutting due to abnormal operating conditions.
  - d) Where a tyre has worn abnormally, it may be possible to regroove just that part of the worn tyre provided a sufficient portion of the original groove is visible before regrooving.
3. It is recommended that the minimum remaining tread depth be 3mm before regrooving. The tread depth should be measured around the circumference at four places to find the minimum remaining depth. Set the cutter blade according to the recommendations shown in this publication.
4. Please ensure that you regroove your Bridgestone steel radials to the patterns, depths and widths recommended in this publication to ensure the good service of your tyres.

5. After regrooving, check that your tyre is free from defects. It is most important to ensure that the belts under the tread have not been exposed.
6. As the number of profile grooves and tread design may vary depending on the dimensions, please contact your local Bridgestone customer services representative for further regrooving information.

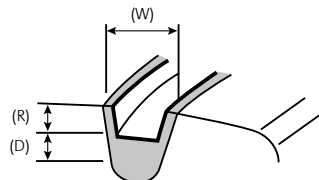
## LEGISLATION

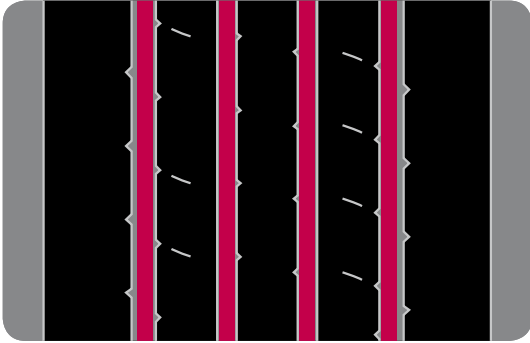
Construction and Use Regulations prohibit the use of regrooved tyres on cars, motorcycles, dual purpose vehicles or goods vehicles weighing less than 2,540 kg (2½ tons) ULW, or electric goods vehicles, which are motor cars over 2,540 kg (2½ tons), which have wheels with a rim diameter less than 405mm (16 inches). Electric vehicles are exempt. Regrooved tyres are also prohibited on trailers less than 1,020 kg (1 ton) ULW, (2,040 kg (2 tons) on caravans) and trailers carrying plant and equipment, which do not exceed the total weight of 2,290 kg (2½ tons).

Generally, with most trucks and buses over 2,540 kg (2½ tons) ULW, and electric goods vehicles and trailers weighing more than 1,020 kg (1 ton), the ULW can be fitted with regrooved tyres provided they are designed for regrooving.

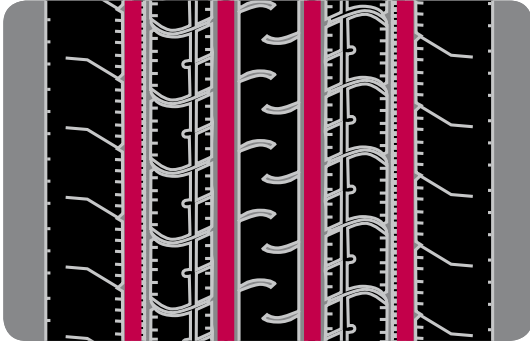
## Example:

- Minimum remaining tread depth = 3 mm (R)
- Recommended regrooving depth = 3 mm (D)
- Depth to which cutter blade is set = 6 mm (R+D)
- Recommended regrooving width = W

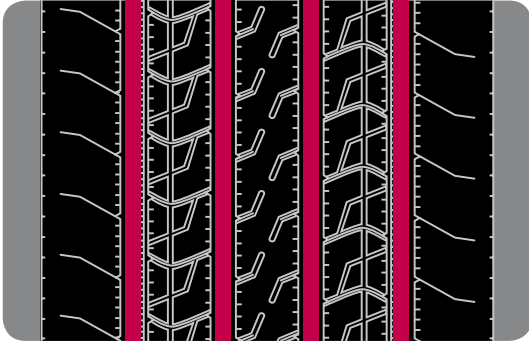




Size	D: Regrooving depth (mm)	W: Regrooving width (mm)
295/80 R 22.5	2.5	7.0 - 8.0
315/80 R 22.5	2.5	7.0 - 8.0
315/70 R 22.5	2.5	8.0 - 9.0



Size	D: Regrooving depth (mm)	W: Regrooving width (mm)
295/80 R 22.5	3.0	7.0 - 8.0
315/80 R 22.5	3.0	7.0 - 8.0
275/70 R 22.5	2.5	6.0 - 7.0
305/70 R 22.5	2.5	7.0 - 8.0
315/70 R 22.5	2.5	7.0 - 8.0
385/65 R 22.5	3.0	8.0
295/60 R 22.5	2.0	7.0 - 8.0
385/55 R 22.5	3.0	7.0 - 8.0



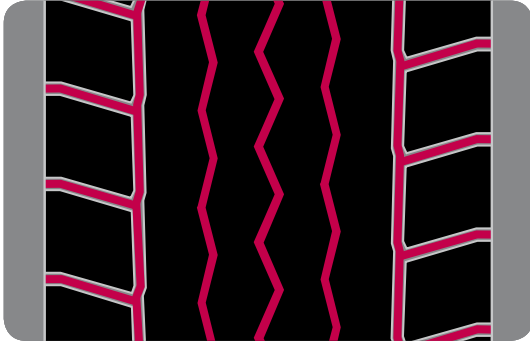
Size	D: Regrooving depth (mm)	W: Regrooving width (mm)
<b>R249 EVO</b>		
315/70 R 22.5	4.0	7.0 - 8.0
<b>R249 EVO Ecopia</b>		
355/50 R 22.5*	3.0	7.0 - 8.0
<b>R249II EVO Ecopia</b>		
315/60 R 22.5	3.0	7.0 - 8.0

\* Available in non Ecopia specification

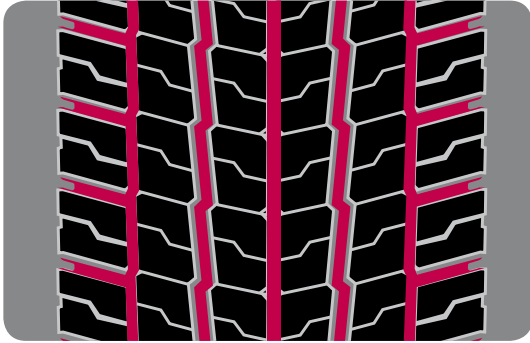


Size	D: Regrooving depth (mm)	W: Regrooving width (mm)
275/80 R 22.5	2.5	7.0 - 8.0
255/70 R 22.5	3.0	6.0 - 7.0



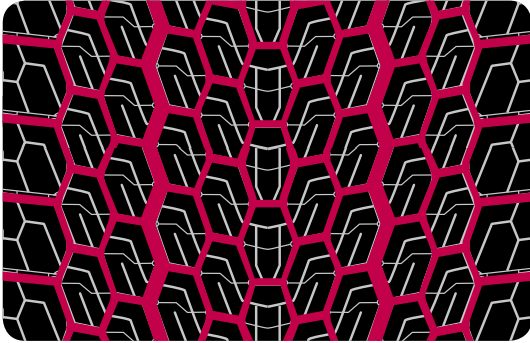


Size	D: Regrooving depth (mm)	W: Regrooving width (mm)
295/80 R 22.5	2.5	7.0 - 8.0
315/80 R 22.5	2.5	7.0 - 8.0
315/70 R 22.5	2.5	7.0 - 8.0
295/60 R 22.5	2.5	7.0 - 8.0
315/60 R 22.5	2.5	7.0 - 8.0

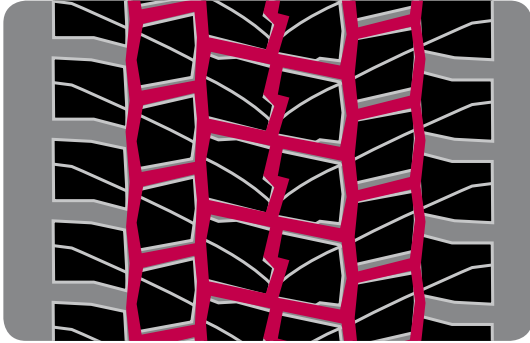


Size	D: Regrooving depth (mm)	W: Regrooving width (mm)
295/80 R 22.5	3.0	7.0 - 8.0
315/80 R 22.5	3.0	7.0 - 8.0
315/70 R 22.5	3.0	7.0 - 8.0
295/60 R 22.5	2.5	7.0 - 8.0
315/60 R 22.5	2.5	7.0 - 8.0
315/45 R 22.5*	2.5	7.0 - 8.0

\* Available in non Ecopia specification



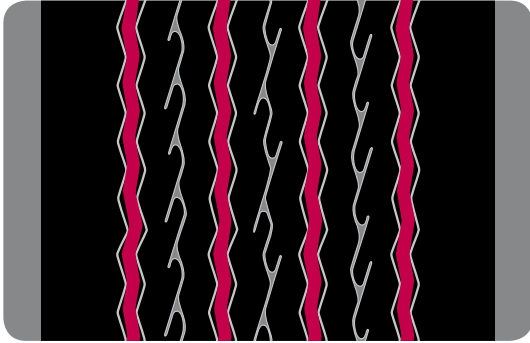
Size	D: Regrooving depth (mm)	W: Regrooving width (mm)
495/45 R 22.5	3.8	7.0 - 8.0



Size	D: Regrooving depth (mm)	W: Regrooving width (mm)
295/80 R 22.5	3.0	7.0 - 8.0
315/80 R 22.5	3.0	7.0 - 8.0
315/70 R 22.5	3.0	7.0 - 8.0



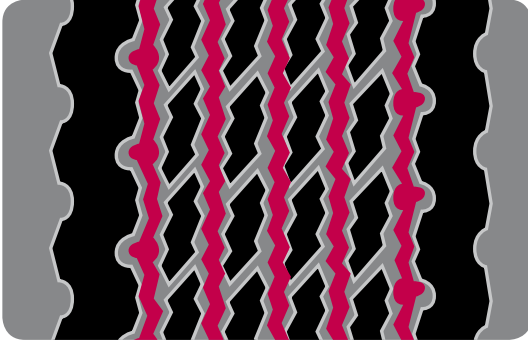
Size	D: Regrooving depth (mm)	W: Regrooving width (mm)
11 R 22.5	2.5	7.0 - 8.0



Size	D: Regrooving depth (mm)	W: Regrooving width (mm)
385/65 R 22.5	2.5	7.0 - 8.0
385/55 R 22.5	2.5	7.0 - 8.0

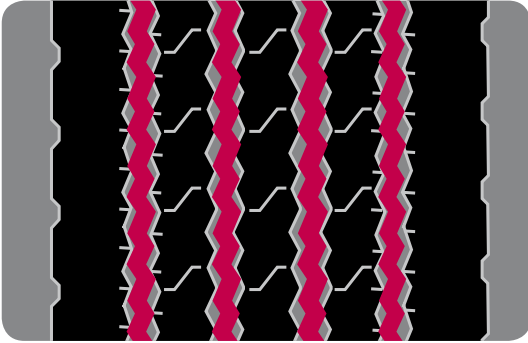


Size	D: Regrooving depth (mm)	W: Regrooving width (mm)
435/50 R 19.5	3.0	7.0 - 9.0

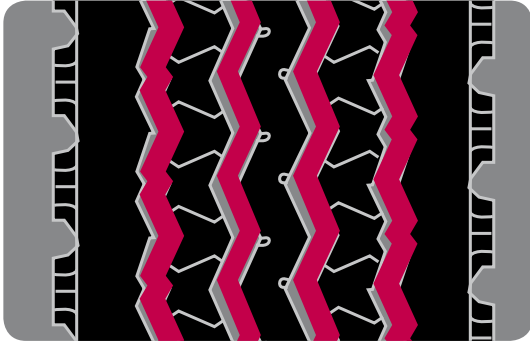


Size	D: Regrooving depth (mm)	W: Regrooving width (mm)
385/65 R 22.5	3.0	8.0 max.
425/65 R 22.5	3.0	8.0 - 9.0
445/65 R 22.5	3.0	9.0 - 10.0

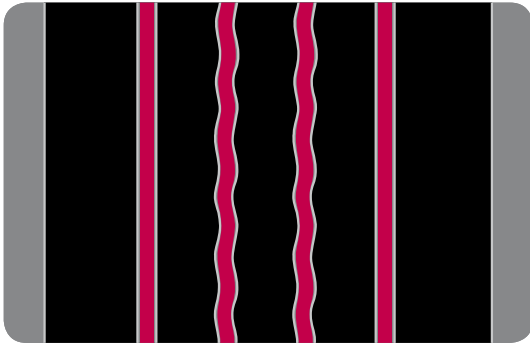




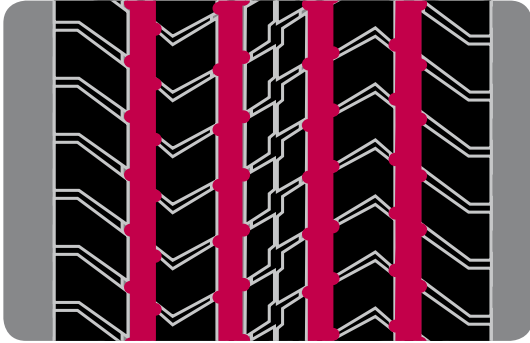
Size	D: Regrooving depth (mm)	W: Regrooving width (mm)
205/80 R 15	2.5	7.0 - 8.0
315/80 R 22.5	2.5	7.0 - 8.0
275/70 R 22.5	3.0	7.0 - 8.0



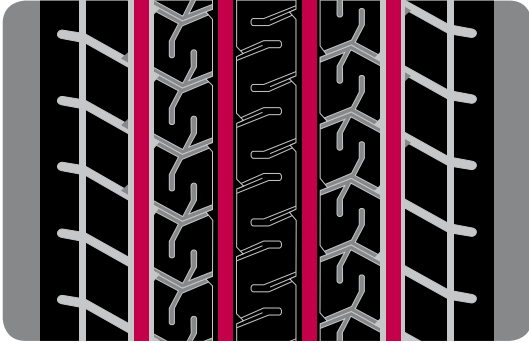
Size	D: Regrooving depth (mm)	W: Regrooving width (mm)
7.5 R 15	2.0	6.0 - 7.0
8.25 R 15	2.0	6.0 - 7.0
11 R 22.5	2.5	7.0 - 8.0



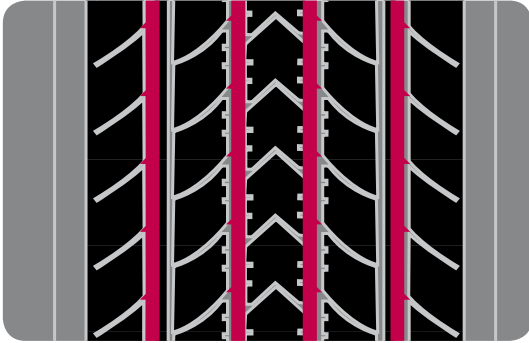
Size	D: Regrooving depth (mm)	W: Regrooving width (mm)
<b>R-STEER 001</b>		
295/80 R 22.5	4.0	7.0 - 8.0
315/80 R 22.5	3.0	7.0 - 8.0
315/70 R 22.5	5.0	7.0 - 8.0
385/65 R 22.5	3.0	8.0
<b>R-STEER 001 EVO</b>		
385/65 R 22.5	3.0	8.0



Size	D: Regrooving depth (mm)	W: Regrooving width (mm)
11 R 22.5	2.5	7.0 - 8.0
12 R 22.5	2.5	7.0 - 8.0
13 R 22.5	3.0	7.0 - 8.0
295/80 R 22.5	2.5	7.0 - 8.0
315/80 R 22.5	2.5	7.0 - 8.0
275/70 R 22.5	2.0	7.0 - 8.0
315/70 R 22.5	2.0	7.0 - 8.0



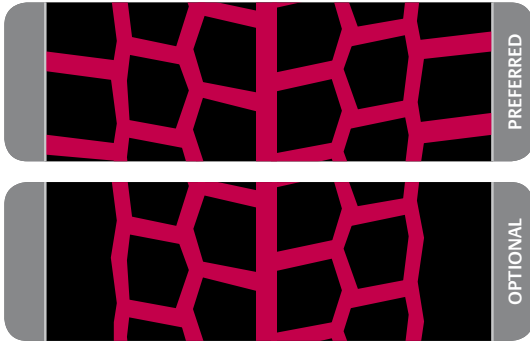
Size	D: Regrooving depth (mm)	W: Regrooving width (mm)
315/70 R 22.5	4.0	7.0 - 8.0



Size	D: Regrooving depth (mm)	W: Regrooving width (mm)
215/75 R 17.5	2.0	6.0 - 7.0
225/75 R 17.5	2.4	7.0 - 8.0
235/75 R 17.5	2.5	7.0 - 8.0
245/70 R 17.5	2.5	7.0 - 8.0
265/70 R 17.5	2.0	7.0 - 8.0
245/70 R 19.5	2.5	7.0 - 8.0
265/70 R 19.5	2.0	7.0 - 8.0
285/70 R 19.5	1.5	7.0 - 8.0
305/70 R 19.5	1.5	7.0 - 8.0

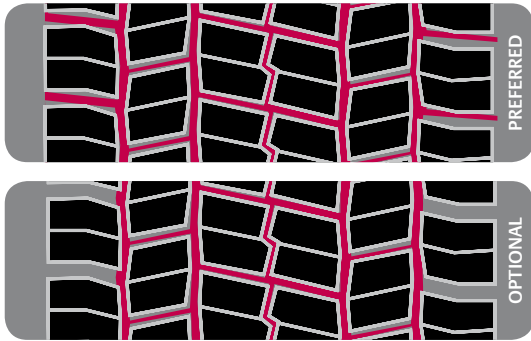


Size	D: Regrooving depth (mm)	W: Regrooving width (mm)
205/75 R 17.5	2.0	7.0 - 8.0
215/75 R 17.5	2.0	7.0 - 8.0
225/75 R 17.5	3.0	7.0 - 8.0
265/70 R 19.5	2.0	7.0 - 8.0
285/70 R 19.5	2.0	7.0 - 8.0
315/80 R 22.5	3.0	8.0
275/70 R 22.5	2.0	7.0 - 8.0
315/70 R 22.5	2.0	7.0 - 8.0
385/65 R 22.5	3.0	5.0
385/55 R 22.5	3.0	5.0 - 6.0

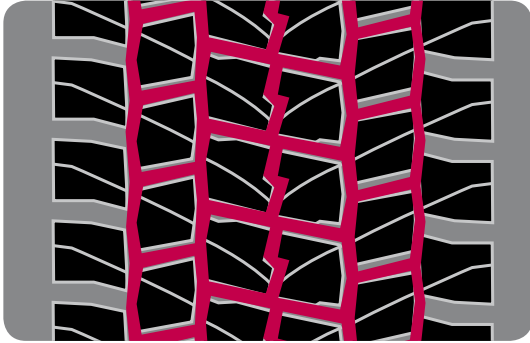


Size	D: Regrooving depth (mm)	W: Regrooving width (mm)
295/80 R 22.5	3.0	7.0 - 8.0
315/80 R 22.5	4.0	7.0 - 8.0
315/70 R 22.5	3.0	7.0 - 8.0
295/60 R 22.5	2.5	5.0
315/60 R 22.5	2.5	5.0

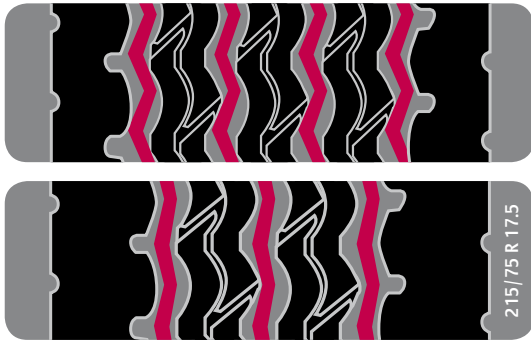




Size	D: Regrooving depth (mm)	W: Regrooving width (mm)
205/75 R 17.5	2.0	6.0 - 7.0
215/75 R 17.5	2.0	6.0 - 7.0
225/75 R 17.5	2.5	7.0 - 8.0
235/75 R 17.5	2.5	7.0 - 8.0
245/70 R 17.5	3.0	7.0 - 8.0
265/70 R 17.5	2.5	7.0 - 8.0
245/70 R 19.5	2.5	7.0 - 8.0
265/70 R 19.5	2.5	7.0 - 8.0
285/70 R 19.5	2.2	7.0 - 8.0
305/70 R 19.5	2.5	7.0 - 8.0
13 R 22.5	2.5	7.0 - 8.0
295/80 R 22.5	2.5	5.0
315/80 R 22.5	3.0	8.0 - 9.0
275/70 R 22.5	2.9	6.0 - 7.0
305/70 R 22.5	2.3	7.0 - 8.0
315/70 R 22.5	2.8	8.0 - 9.0



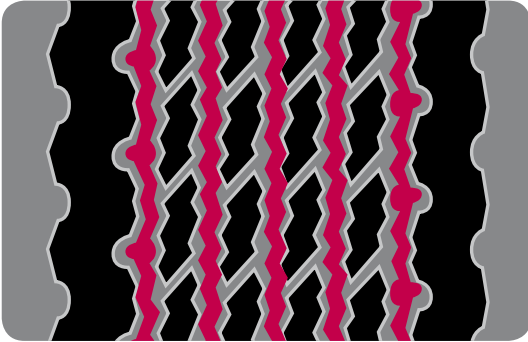
Size	D: Regrooving depth (mm)	W: Regrooving width (mm)
295/80 R 22.5	3.0	7.0 - 8.0
315/80 R 22.5	3.0	7.0 - 8.0
315/70 R 22.5	3.0	7.0 - 8.0



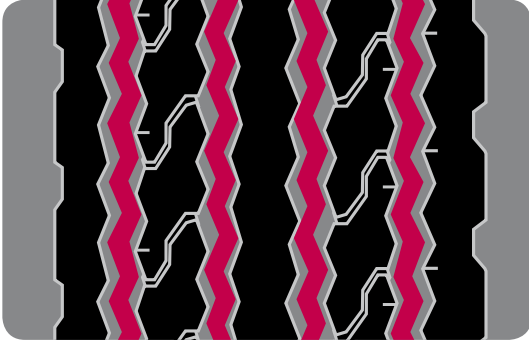
Size	D: Regrooving depth (mm)	W: Regrooving width (mm)
<b>R168</b>		
9.5 R 17.5	3.0	7.0 - 8.0
215/75 R 17.5	3.0	7.0 - 8.0
235/75 R 17.5	2.5	7.0 - 8.0
245/70 R 17.5	2.0	7.0 - 8.0
205/65 R 17.5	2.0	7.0 - 8.0
245/70 R 19.5	2.5	7.0 - 8.0
265/70 R 19.5	3.0	7.0 - 8.0
285/70 R 19.5	3.0	7.0 - 8.0
385/55 R 22.5	3.0	7.0 - 8.0
<b>R168PLUS</b>		
385/65 R 22.5	3.0	7.0 - 8.0



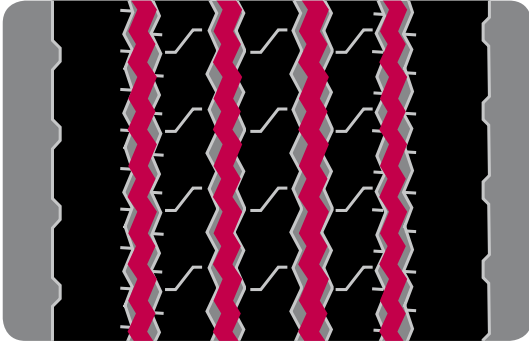
Size	D: Regrooving depth (mm)	W: Regrooving width (mm)
435/50 R 19.5	3.0	7.0 - 9.0



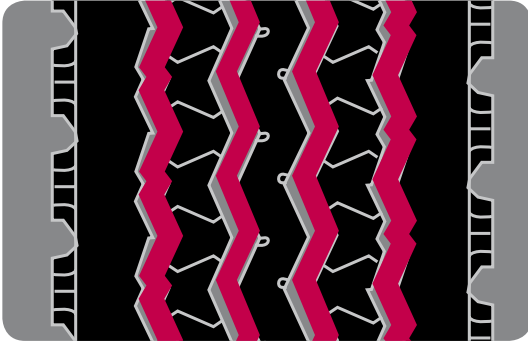
Size	D: Regrooving depth (mm)	W: Regrooving width (mm)
385/65 R 22.5	3.0	8.0 max.
425/65 R 22.5	3.0	8.0 - 9.0
445/65 R 22.5	3.0	9.0 - 10.0



Size	D: Regrooving depth (mm)	W: Regrooving width (mm)
10 R 17.5	2.5	7.0 - 8.0

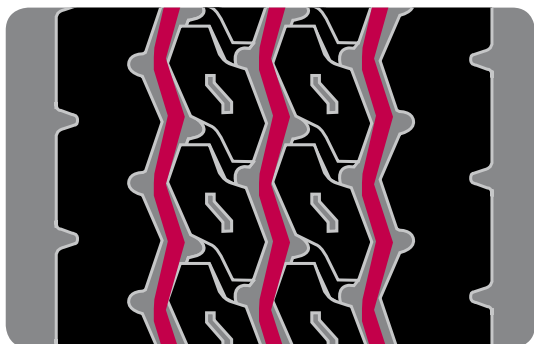


Size	D: Regrooving depth (mm)	W: Regrooving width (mm)
205/80 R 15	2.5	7.0 - 8.0
315/80 R 22.5	2.5	7.0 - 8.0
275/70 R 22.5	3.0	7.0 - 8.0

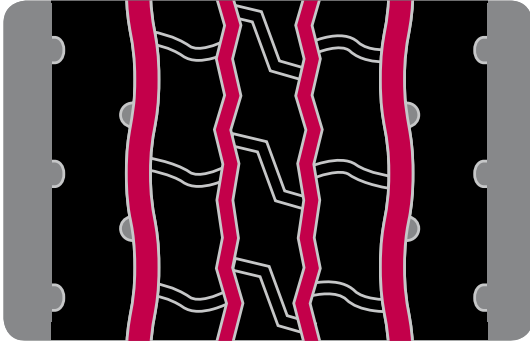


Size	D: Regrooving depth (mm)	W: Regrooving width (mm)
7.5 R 15	2.0	6.0 - 7.0
8.25 R 15	2.0	6.0 - 7.0
11 R 22.5	2.5	7.0 - 8.0

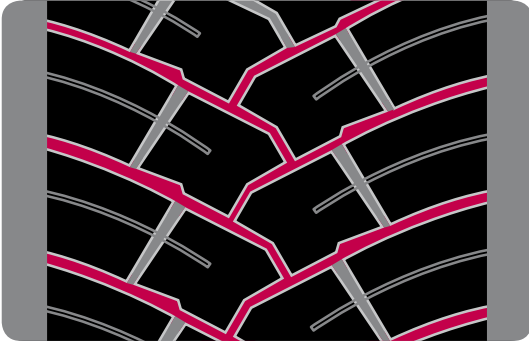




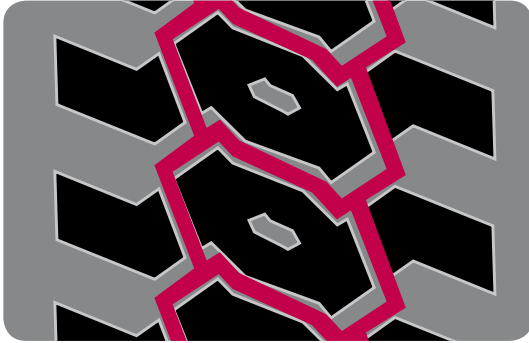
Size	D: Regrooving depth (mm)	W: Regrooving width (mm)
<b>M840</b>		
10 R 17.5	3.0	6.0 max.
10 R 22.5	3.0	8.0 max.
11 R 22.5	3.0	8.0 max.
12 R 22.5	3.0	8.0 max.
13 R 22.5	3.0	8.0 max.
295/80 R 22.5	3.0	8.0 max.
315/80 R 22.5	4.0	8.0 max.
275/70 R 22.5	3.0	6.0 max.
<b>M840 EVO</b>		
13 R 22.5	3.0	8.0 max.
315/80 R 22.5	4.0	8.0 max.
<b>M840 EXTRA</b>		
325/95 R 24	3.5	7.0 - 8.0



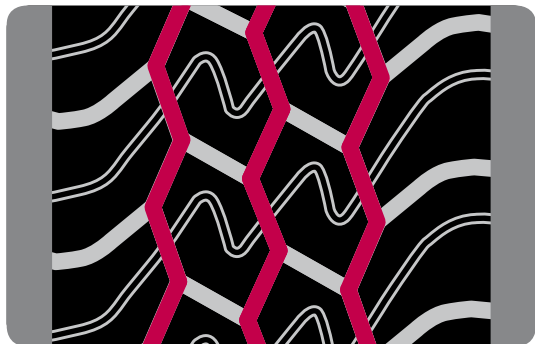
Size	D: Regrooving depth (mm)	W: Regrooving width (mm)
315/80 R 22.5	4.0	8.0 max



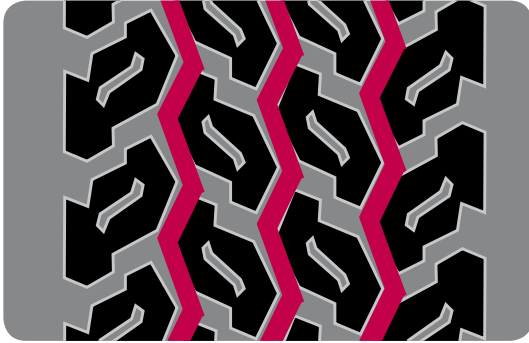
Size	D: Regrooving depth (mm)	W: Regrooving width (mm)
13 R 22.5	3.5	7.0 - 8.0
315/80 R 22.5	4.0	8.0



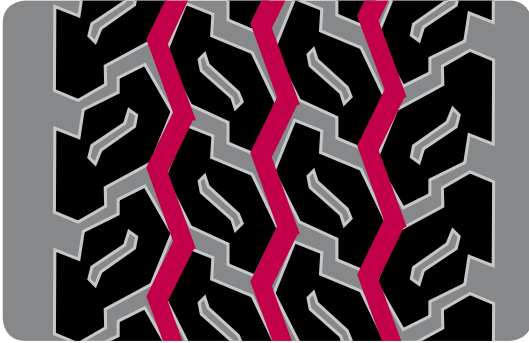
Size	D: Regrooving depth (mm)	W: Regrooving width (mm)
<b>L355</b>		
13 R 22.5	3.5	7.0 - 8.0
315/80 R 22.5	4.0	8.0
<b>L355 EVO</b>		
13 R 22.5	3.5	7.0 - 8.0
315/80 R 22.5	4.0	8.0



Size	D: Regrooving depth (mm)	W: Regrooving width (mm)
385/65 R 22.5	3.0	7.0 - 8.0



Size	D: Regrooving depth (mm)	W: Regrooving width (mm)
<b>M748</b>		
365/80 R 20	2.0	6.0 - 7.0
385/65 R 22.5	3.0	7.0 - 8.0
425/65 R 22.5	3.0	8.0 - 9.0
445/65 R 22.5	3.0	9.0 - 10.0
<b>M748 EVO</b>		
385/65 R 22.5	3.0	7.0 - 8.0



---

Size	D: Regrooving depth (mm)	W: Regrooving width (mm)
445/65 R 22.5	3.0	7.0 - 8.0

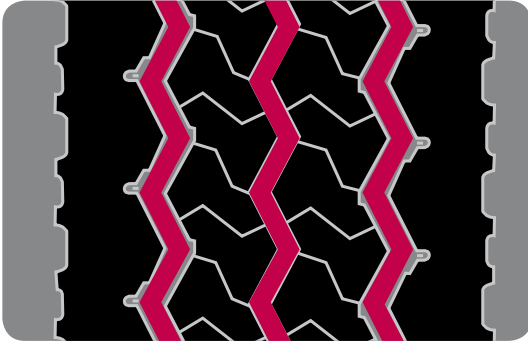


Size	D: Regrooving depth (mm)	W: Regrooving width (mm)
<b>L317</b>		
12 R 22.5	2.5	7.0 - 8.0
13 R 22.5	3.5	7.0 - 8.0
12.00 R 24	3.00	7.0 - 8.0
<b>L317 EVO</b>		
13 R 22.5	3.5	7.0 - 8.0

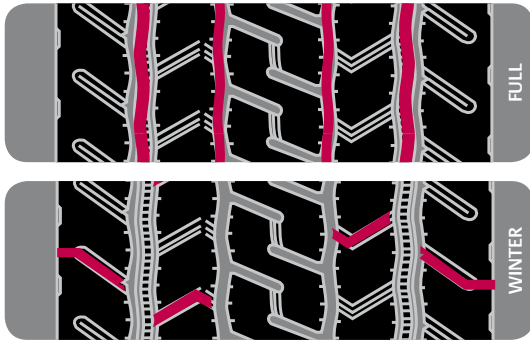




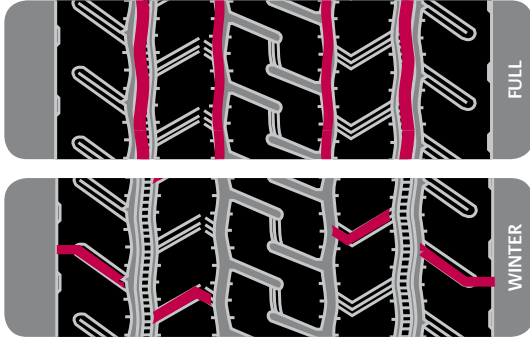
Size	D: Regrooving depth (mm)	W: Regrooving width (mm)
245/70 R 19.5	3.0	8.0
275/70 R 22.5	3.0	7.0 - 8.0



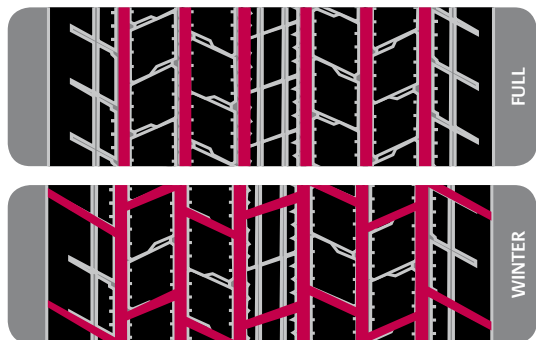
Size	D: Regrooving depth (mm)	W: Regrooving width (mm)
305/70 R 19.5	3.0	7.0 - 8.0
11 R 22.5	3.0	8.0
12 R 22.5	3.0	8.0
295/80 R 22.5	2.5	7.0 - 8.0
275/70 R 22.5	2.0	8.0
305/70 R 22.5	3.0	7.0 - 8.0



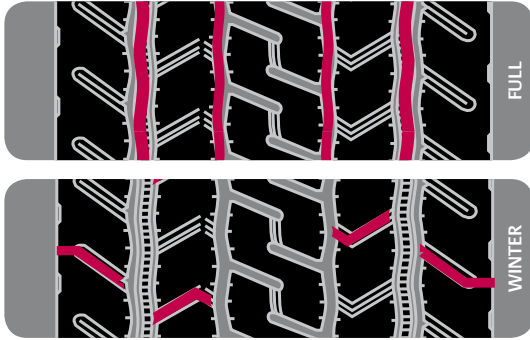
Size	D: Regrooving depth (mm)	W: Regrooving width (mm)
315/80 R 22.5	3.0	8.0
275/70 R 22.5	2.0	7.0 - 8.0
315/70 R 22.5	2.0	7.0 - 8.0



Size	D: Regrooving depth (mm)	W: Regrooving width (mm)
295/80 R 22.5	3.0	8.0



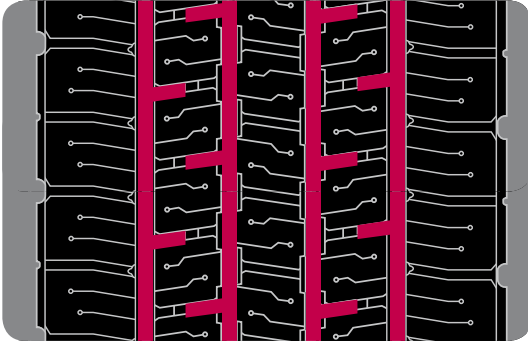
Size	D: Regrooving depth (mm)	W: Regrooving width (mm)
435/45 R 22.5	3.0	7.0 - 8.0
455/45 R 22.5	3.0	7.0 - 8.0



Size	D: Regrooving depth (mm)	W: Regrooving width (mm)
295/80 R 22.5	3.0	8.0

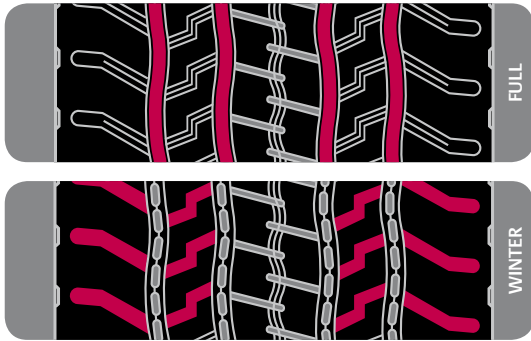


Size	D: Regrooving depth (mm)	W: Regrooving width (mm)
315/80 R 22.5	3.0	8.0
275/70 R 22.5	2.0	7.0 - 8.0
315/70 R 22.5	2.0	7.0 - 8.0

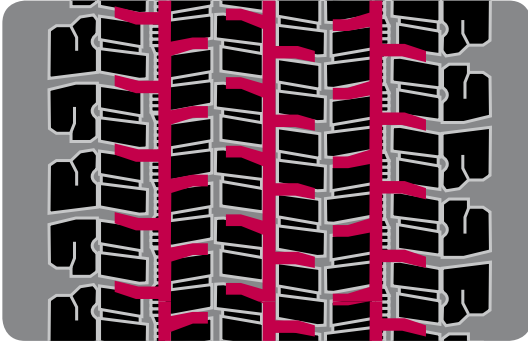


Size	D: Regrooving depth (mm)	W: Regrooving width (mm)
295/80 R 22.5	2.5	7.0 - 8.0
315/80 R 22.5	3.0	7.0 - 8.0
275/70 R 22.5	2.5	7.0 - 8.0
315/70 R 22.5	2.5	7.0 - 8.0

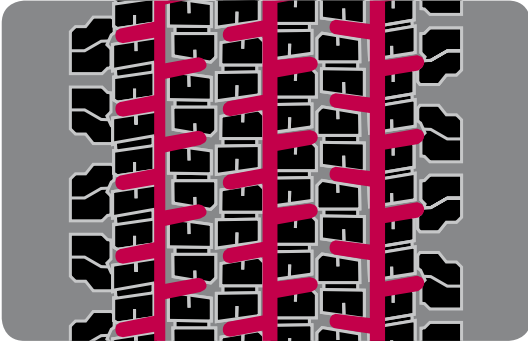




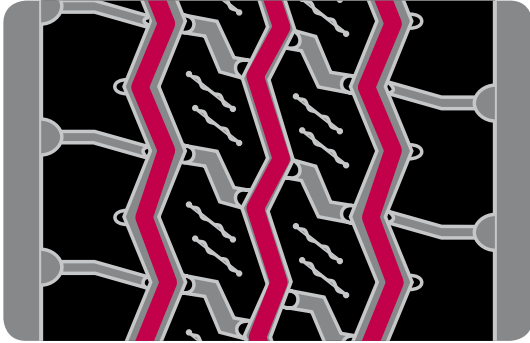
Size	D: Regrooving depth (mm)	W: Regrooving width (mm)
385/65 R 22.5	3.0	5.0
385/55 R 22.5	3.0	5.0 - 6.0



Size	D: Regrooving depth (mm)	W: Regrooving width (mm)
295/80 R 22.5	2.5	7.0 - 8.0
315/80 R 22.5	3.0	7.0 - 8.0
315/70 R 22.5	2.5	7.0 - 8.0
295/60 R 22.5	3.0	7.0 - 8.0



Size	D: Regrooving depth (mm)	W: Regrooving width (mm)
12 R 22.5	3.0	7.0 - 8.0
295/80 R 22.5	3.0	7.0 - 8.0
315/80 R 22.5	3.0	7.0 - 8.0
275/70 R 22.5	2.0	7.0 - 8.0



Size	D: Regrooving depth (mm)	W: Regrooving width (mm)
265/70 R 19.5	3.0	8.0 max